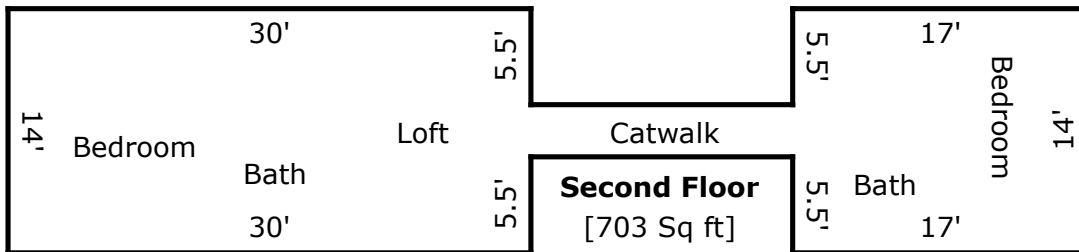
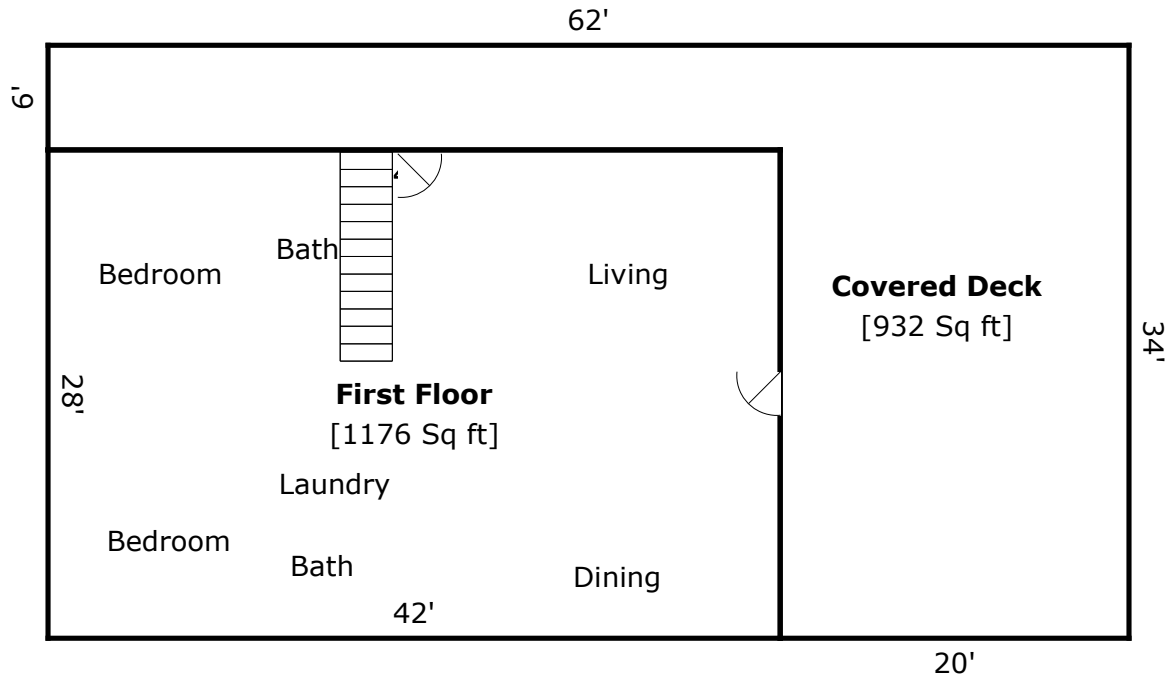


Driveway



Firepit



TOTAL Sketch by a la mode

Area Calculations Summary

Living Area		Calculation Details	
First Floor	1176 Sq ft	$42 \times 28 = 1176$	
Second Floor	703 Sq ft	$14 \times 17 = 238$ $14 \times 30 = 420$ $15 \times 3 = 45$	
Total Living Area (Rounded):	1879 Sq ft		
Non-living Area			
Covered Deck	932 Sq ft	$20 \times 28 = 560$ $6 \times 62 = 372$	